



Utilities
Kingston

2019 ANNUAL REPORT ON DRINKING WATER QUALITY

JANUARY 1 TO DECEMBER 31 2019

SYDENHAM WATER TREATMENT PLANT

Drinking Water System Number: 260069290

Drinking Water System Owner: Township of South Frontenac

Drinking Water System Category: Large Municipal Residential

Drinking Water Quality

Utilities Kingston is proud to present this annual report on drinking water quality. This report has been prepared in accordance to Section 11 of Ontario Regulation 170 03. Regulation 170 03 sets requirements for public waterworks with regard to sampling and testing, levels of treatment, licensing of staff, and notification of authorities and the public about water quality. Free copies of this report prepared in accordance to Schedule 22 of Ontario Regulation 170 03, are available by public request at any City of Kingston offices, at our water plant locations and at www.utilitieskingston.com. Free copies of the Summary Report are available upon request. Notices of availability are generally made through the local newspapers and radio. Further information on the Drinking Water Regulations can be found on the Ministry of the Environment web site at www.ontario.ca/page/drinkingwater. For further information about this report or any questions regarding accessibility contact Megan Lockwood at mlockwood@utilitieskingston.com, or call 613-546-1181 Ext 2291

Inside This Report

1. Plant Description and Treatment Process
2. Monetary expenses incurred during this reporting period
3. Notifications Submitted in accordance to the Safe Drinking Water Act
4. Definitions and Terms
5. Process Diagram
6. Water Quality Test Results



Utilities Kingston

1. Plant Description & Treatment Processes

Raw Water Source.

The source of water treated by this plant is Sydenham Lake. The intake is located 128m east of the treatment plant, at approximately 6m of water depth.

Zebra Mussel Control.

Pre-chlorination takes place at the mouth of the intake. This protects the intake from becoming encrusted with zebra mussels, which would restrict the flow of water through the intake.

Screening.

Two stationary screens located in the low lift pumping well remove any large debris such as weeds, fish, etc.

Low Lift Pumps.

These pumps lift the water from lake level to the main treatment building. There are three submersible pumps each with a capacity of 7.8 l/sec which pump the water into the main building for treatment.

Chemical Feed System

XL1900 (Polyaluminum Chloride) is added to the water as it enters the process building just prior to passing through the in-line mixer. The particles in the water will collide with the PACl particles as the water flows in a spiral motion through the mixer, and then join together to form larger particles called floc.

Filters.

Three pressure filtration tanks containing a ceramic filtration media remove the floc

formed from the addition of PACl and the particles present in the water. Water flows through the filters into two baffled clean water reservoirs called clear wells.

Backwash.

Filters are washed to remove the particulates they have collected over the previous 48 hrs. Clean water from the clear well is pumped backwards through the filter, and the filter is agitated by air scouring the filter media to break up any large particles.

Process Waste Management

Effluent water from the backwash process is directed to a backwash storage tank for further settling. The supernatant (the clear water at the top of the tank after settling) is directed back to Sydenham Lake and the settled sludge is mechanically removed and sent for further treatment.

GAC Contactors

During periods of high dissolved organic content in the source water, filter effluent water is directed to two pressure filtration tanks containing granular activated carbon (GAC). The GAC contactors assist in the removal of dissolved organics which react with chlorine to produce chlorination by-products. The GAC contactors are periodically backwashed to remove the particulates they have collected.

Primary Disinfection

Primary disinfection of the filtered water is achieved via UV light and free chlorine residual. 2 UV reactors (duty/standby) each using 12 low pressure high output lamps, provide the UV light disinfection. Free chlorine disinfection follows the UV process with the use of two chemical metering pumps



Utilities Kingston

(duty/standby) which provide sodium hypochlorite to an application point downstream of the UV reactors at the entrance to the detention piping.

Secondary Disinfection

Secondary disinfection is the maintenance of a disinfectant residual throughout the distribution system which is achieved with chloramines. Following the free chlorine disinfection process, ammonium sulphate is added with the use of two chemical metering pumps (duty/standby), at an approximate rate of 4:1 ratio (chlorine/ammonia), to react with the free chlorine residual to form chloramines. The application dosages of sodium hypochlorite and ammonium sulphate is adjusted to produce a sufficient in plant combined chlorine residual to ensure that minimum residuals are maintained in the distribution system.

Clear Wells.

Two baffled clear wells, each with a volume of 115 m³, provide storage of filtered water and allow for a sufficient amount of chlorine contact time with the water to ensure proper disinfection.

High Lift Pumps.

Three high lift pumps move treated water from the clear wells into the distribution system.

Standby Equipment.

A 130 kW standby diesel generator provides electricity to the water plant during power interruptions. The generator and standby equipment is tested regularly to ensure proper operation when required.

Elevated Tank.

The elevated tank has a storage capacity of 1019 m³ and provides pressure to the distribution system.

Distribution System.

There are approximately 6363 meters of water mains, and 47 fire hydrants in the system. Once all connections to the distribution system have been completed, the drinking water system will supply water to 274 customer connections.

2. Monetary expenses incurred during this reporting period

Under Section 11 of Ontario Reg. 170/03, a description of any major expenses incurred during this reporting period must be included in the annual report. The major expenses for this drinking water system are listed below.

- Leak detection was performed by Utilities Kingston underground infrastructure department in order to locate water leaks in the distribution system.
- Water tower interior work and safety upgrades completed
- Replacement of UV reactor bulb and quartz sleeve.
- Replacement of Granular Activated Carbon in two pressure filters
- Chemical loading dock/platform extension completed.



Utilities Kingston

-Extensive system flushing in the summer of 2019 for chloramination residual management

3. Notifications submitted in accordance to the Safe Drinking Water Act

Under Ontario Reg. 170/03, notifications were required for any instances where a sample result indicated that a parameter used to measure water quality exceeded a Maximum Acceptable Concentration (MAC). Once a notification is received from a laboratory or an observation of any other indicator of adverse water quality is made by operations personnel, corrective action as dictated by the regulations is initiated in an effort to confirm the initial result. If confirmed, further action may be recommended by the Medical Officer of Health. If not confirmed sampling will typically return to the normal schedule, or depending on the parameter, Utilities Kingston may choose to increase the sampling frequency to more closely monitor the parameter for a period of time.

There were no events within the Sydenham Water Treatment Plant which required notification during this reporting period.

4. Definition & Terms

TCU - True Colour Units

mg - milligram

N/A - Not Applicable

N/D - Non -Detectable

NTU - Nephelometric Turbidity Units - A measure of the amount of particles in water.

mg/l - Milligrams per litre. This is a measure of the concentration of a parameter in water, also called parts per million (ppm).

µg/L - Micrograms per litre, also called parts per billion.

ng/l - Nanograms per litre, parts per trillion.

Parameter-A substance that we sample and analyze for in the water.

AO - Aesthetic objective. AOs are not health related, but may affect the taste, odour, colour or clarity of the water

OG - Operational guideline. Set to ensure efficient treatment and distribution of water.

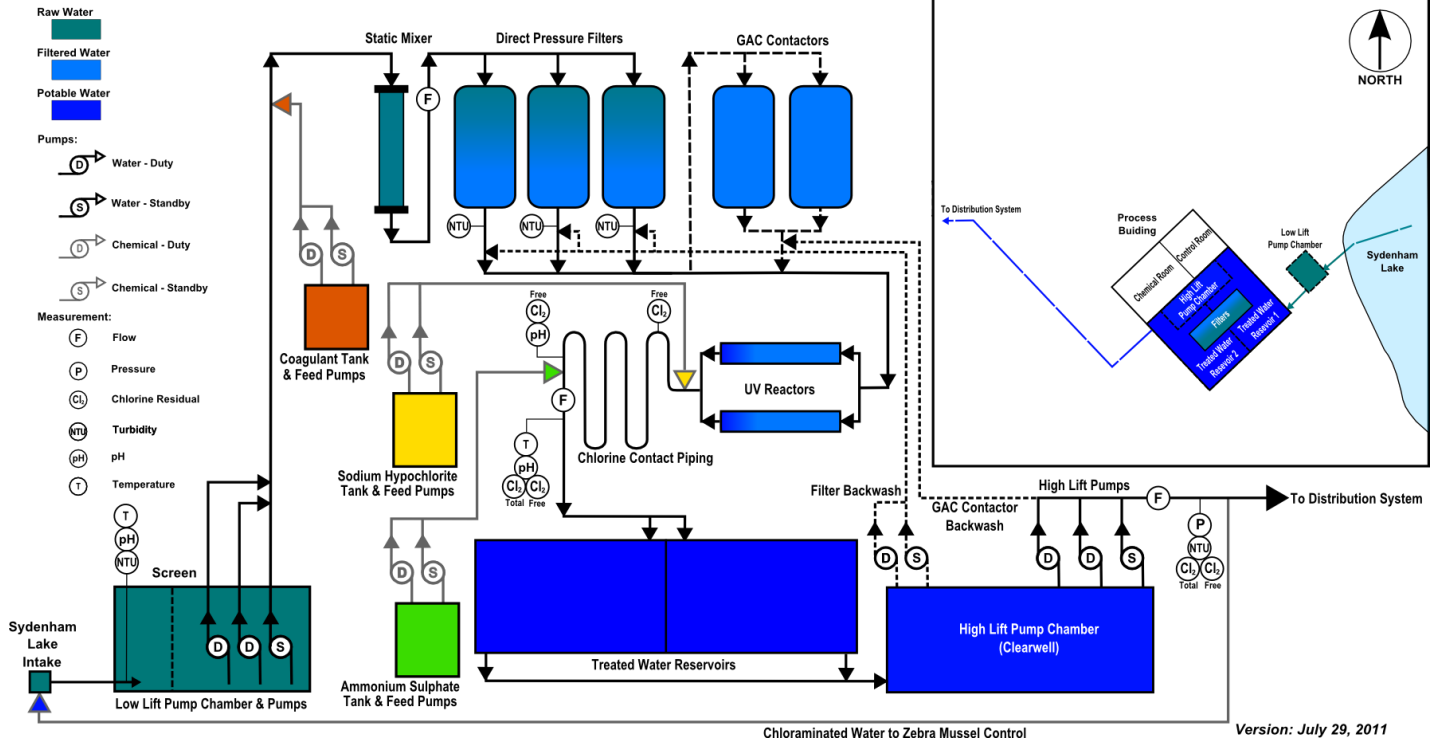
MAC - Maximum Acceptable Concentration. This is a health-related drinking water standard established for contaminants having known or suspected adverse health effects when above a certain concentration. The length of time the MAC can be exceeded without injury to health will depend on the nature and concentration of the parameter.



Utilities Kingston

5. Flow Diagram

SYDENHAM WATER TREATMENT PLANT PROCESS FLOW





Utilities Kingston

6. Water Quality Test Results

Microbiological testing done under regulation 170 03, during this reporting period

	MAC (E. Coli & Total Coliforms)	Number of Samples	Range of E. Coli or Fecal Results (min # - max #)	Range of Total Coliform Results (min # - max #)	Number of HPC Samples	Range of HPC Results (min # - max #)
Raw	N/A	54	0 - 12	1 - >400	3	
Treated	*	55	0	0	52	<10 - 40
Distribution System	*	112	0	0	48	<10 - 30

**Indicator of adverse water quality if detected*

Operational testing done under schedule 7, 8 or 9 of regulation 170/03 during this reporting period

Parameter	MAC	Number of Samples	Range of Results (min # - max #)	Results Average	Unit of Measure	Parameter Description
Turbidity Raw Water	N/A	Continuous	0.110 - 5.530*	N/A	NTU	Turbidity is a measure of particles in water.
Turbidity Treated Water	N/A	Continuous	0.010 - 0.80*	N/A	NTU	Turbidity is a measure of particles in water.
Combined Chlorine Residual Treated Water	See parameter description	Continuous	1.36 - 2.32*	N/A	mg/l	Recommended level of at least 1.00 mg/l in distribution system to maintain microbiological quality. 0.25 mg/l minimum.
Turbidity Filter#1	1.0 NTU for >15 min.	Continuous	0.02 - 0.99**	0.10	NTU	Turbidity is a measure of particles in water.
Turbidity Filter#2	1.0 NTU for	Continuous	0.03 - 0.99**	0.09	NTU	Turbidity is a measure of



Utilities Kingston

Parameter	MAC	Number of Samples	Range of Results (min # - max #)	Results Average	Unit of Measure	Parameter Description
	>15 min.					particles in water.
Turbidity Filter#3	1.0 NTU for >15 min.	Continuous	0.02 – 0.89**	0.08	NTU	Turbidity is a measure of particles in water.
Chloramines Residual Distribution System	See parameter description	Continuous	0.41 – 2.39	N/A	mg/l	Recommended level of at least 1.0 mg/l combined chlorine in distribution system to maintain microbiological quality. 0.25 mg/l combined chlorine minimum.

* Note: For these parameters the range of results is determined through in house lab testing.

** Note: The filters are programmed to automatically shut down before reaching the regulatory maximum of 1.0 NTU

Additional testing and sampling carried out in accordance with the requirements of the DWWP or MDWL

Sample Location	MAC	Parameter	Number of Samples	Results Average	Unit of Measure	Parameter Description
Backwash Wastewater Effluent	15	Total Suspended Solids	16	14.5	mg/l	A measure of the particulates collected in the filtration process.



Utilities
Kingston

Summary of Raw water parameters tested during this reporting period

Parameter	MAC	Number of Samples	Results Range	Unit of Measure	MAC Exceedance	Parameter Description
Microcystin	1.5	23	<0.15 – 1.99	µg/L	Yes	Naturally occurring (released from blooms of blue-green algae)

Summary of treated water Schedule 23 inorganic parameters tested during this reporting period

Parameter	MAC	Number of Samples	Results Range	Unit of Measure	MAC Exceedance	Parameter Description
Antimony	0.006	1	<0.0001	mg/l	No	Discharge from petroleum refineries; fire retardants; ceramics; electronics; solder
Arsenic	0.025	1	0.0002	mg/l	No	Naturally occurring in surface waters / mine drainage
Barium	1.0	1	0.049	mg/l	No	Erosion of natural deposits. Discharge from metal refineries, oil drilling wastes.
Boron	5.0	1	0.009	mg/l	No	Erosion of natural deposits, industrial waste effluents.
Cadmium	0.005	1	< 0.000015	mg/l	No	Industrial discharge
Chromium	0.05	1	<0.002	mg/l	No	Industrial residues
Mercury	0.001	1	<0.00002	mg/l	No	Erosion of natural deposits, industrial discharges.
Selenium	0.01	1	< 0.001	mg/l	No	Discharge from refineries,



Utilities Kingston

Parameter	MAC	Number of Samples	Results Range	Unit of Measure	MAC Exceedance	Parameter Description
						mines, chemical manufacture
Uranium	0.02	1	< 0.00005	mg/l	No	Erosion of natural deposits.

Summary of treated water Schedule 24 organic parameters tested during this reporting period

Parameter	MAC	Number of Samples	Results Range	Unit of Measure	MAC Exceedance	Parameter Description
Alachlor	5	1	<0.3	µg/L	No	Agricultural herbicide
Atrazine + N-dealkylated metabolites	5	1	<0.5	µg/L	No	Agricultural herbicide
Azinphos-methyl	20	1	<1	µg/L	No	Insecticide
Benzene	5	1	<0.5	µg/L	No	Discharge from plastics manufacturing, leaking fuel tanks
Benzo(a)pyrene	0.01	1	<0.005	µg/L	No	Formed from the incomplete burning of organic matter.
Bromoxynil	5	1	<0.5	µg/L	No	Agricultural herbicide
Carbaryl	90	1	<3	µg/L	No	Agricultural/Forestry/ Household insecticide
Carbofuran	90	1	<1	µg/L	No	Agricultural insecticide
Carbon Tetrachloride	5	1	<0.2	µg/L	No	Discharge from chemical and industrial activities
Chlorpyrifos	90	1	<0.5	µg/L	No	Agricultural/ Household insecticide



Utilities Kingston

Parameter	MAC	Number of Samples	Results Range	Unit of Measure	MAC Exceedance	Parameter Description
Diazinon	20	1	<1	µg/L	No	Agricultural/ Livestock Operation/ Residential insecticide
Dicamba	120	1	<10	µg/L	No	Agricultural herbicide
1,2-Dichlorobenzene	200	1	<0.5	µg/L	No	Discharge from industrial chemical factories
1,4-Dichlorobenzene	5	1	<0.5	µg/L	No	Discharge from industrial chemical factories
1,2-Dichloroethane	5	1	<0.5	µg/L	No	Discharge from industrial chemical factories
1,1-Dichloroethylene (vinylidene chloride)	14	1	<0.5	µg/L	No	Discharge from industrial chemical factories
Dichloromethane	50	1	<5	µg/L	No	Discharge from pharmaceutical and chemical factories
2-4 Dichlorophenol	900	1	<0.1	µg/L	No	Industrial contamination/ reaction with chlorine
2,4-Dichlorophenoxy acetic acid (2,4-D)	100	1	<10	µg/L	No	Agricultural/ Residential herbicide
Diclofop-methyl	9	1	<0.9	µg/L	No	Agricultural herbicide
Dimethoate	20	1	<1	µg/L	No	Agricultural/ Livestock Operation/ Forestry insecticide
Diquat	70	1	<5	µg/L	No	Agricultural/ Aquatic herbicide
Diuron	150	1	<5	µg/L	No	Agricultural/ Industrial/ herbicide
Glyphosate	280	1	<25	µg/L	No	Agricultural/Forestry/ Household herbicide



Utilities Kingston

Parameter	MAC	Number of Samples	Results Range	Unit of Measure	MAC Exceedance	Parameter Description
Malathion	190	1	<5	µg/L	No	Fruit & Vegetable / pest control insecticide
2-methyl-4-chlorophenoxyacetic acid (MCPA)	0.1	1	< 0.010	mg/L	No	Leaching and/or runoff from agricultural and other uses
Metolachlor	50	1	<3	µg/L	No	Agricultural herbicide
Metribuzin	80	1	<3	µg/L	No	Agricultural herbicide
Monochlorobenzene	80	1	<0.5	µg/L	No	Discharge from industrial and agricultural chemical factories and dry cleaning facilities
Paraquat	10	1	<1	µg/L	No	Agricultural/ Aquatic herbicide
Pentachlorophenol	60	1	<0.1	µg/L	No	Pesticide/ wood preservative residue
Phorate	2	1	<0.3	µg/L	No	Agricultural insecticide
Picloram	190	1	<20	µg/L	No	Industrial herbicide
Polychlorinated Biphenyls(PCB)	3	1	<0.05	µg/L	No	Residue from various industrial uses
Prometryne	1	1	<0.1	µg/L	No	Agricultural herbicide
Simazine	10	1	<0.5	µg/L	No	Agricultural herbicide or its residue
Terbufos	1	1	<0.3	µg/L	No	Agricultural insecticide
Tetrachloroethylene	30	1	<0.5	µg/L	No	Leaching from PVC pipes; discharge from factories, dry cleaners and auto shops (metal degreaser)
2,3,4,6-Tetrachlorophenol	100	1	<0.1	µg/L	No	Wood preservative



Utilities Kingston

Parameter	MAC	Number of Samples	Results Range	Unit of Measure	MAC Exceedance	Parameter Description
Triallate	230	1	<10	µg/L	No	Agricultural herbicide
Trichloroethylene	5	1	<0.1	µg/L	No	Discharge from metal degreasing sites and other factories
2,4,6-Trichlorophenol	5	1	<0.1	µg/L	No	Pesticide manufacturing
Trifluralin	45	1	<0.5	µg/L	No	Agricultural herbicide
Vinyl Chloride	2	1	<0.2	µg/L	No	Leaching from PVC pipes; discharge from plastics factories

Summary of other regulatory treated water parameters tested during this reporting period

Parameter	MAC	Number of Samples	Results Range	Unit of Measure	MAC Exceedance	Parameter Description
Fluoride	1.5	1	<0.1	mg/l	No	Naturally occurring.
Nitrite	1	4	<0.1	mg/l	No	A natural component of water at this level.
Nitrate	10	4	<0.1 – 0.2	mg/l	No	Runoff from fertilizer use, erosion of natural deposits
Sodium	20	1	10	mg/l	No	Occurs naturally in the earth's crust. *Notification is required every 60 months if greater than 20 mg/l.



Utilities Kingston

Summary of additional treated water parameters tested during this reporting period

Parameter	MAC	Number of Samples	Results Range	Unit of Measure	MAC Exceedance	Parameter Description
Microcystin	1.5	23	<0.15 – <0.15	µg/L	No	Naturally occurring (released from blooms of blue-green algae)

Summary of regulatory distribution drinking water parameters tested during this reporting period

Parameter	MAC	Number of Samples	Result Value	Unit of Measure	Exceedance	Parameter Description
Alkalinity (as CaCO ₃)	N/A	2	110	mg/l	No	A measure of the resistance of the water to the effects of acids. Expressed as calcium carbonate.
Total Haloacetic acids	0.08 (Annual avg.)	4	0.0168	mg/L	No	By-product of drinking water disinfection with chlorine. Based on a running annual average
pH	6.5–8.5 OG	1	7.89		No	An indicator of the acidity of water.
Total Trihalomethanes	100 (Annual avg.)	4	13.5	µg/L	No	By-product of chlorination. * The MAC for THMs of 100 µg/L is based on a running annual average.



Utilities
Kingston

Summary of raw water testing analyzed by in house laboratory during this reporting period

Parameter	MAC	Number of Samples	Results Range	Unit of Measure	Exceedance	Parameter Description
UV Transmittance	N/A	107	63.4 – 92.4	%	No	UV transmittance is a measure of the percentage of transmittance of UV light

Summary of treated water testing analyzed by in house laboratory during this reporting period

Parameter	MAC	Number of Samples	Results Range	Unit of Measure	Exceedance	Parameter Description
Aluminum	0.1	117	0.002 – 0.320	mg/l	Yes	May be naturally present or a residual from the coagulation process.
Free Ammonia	N/A	128	0.02 – 0.60	mg/l	No	Residual from the addition of Ammonium Sulphate for the secondary disinfection process
Monochloramines	3.0	128	1.28 – 2.61	mg/L.	No	Chloramines are produced when ammonia is added to chlorinated water during the disinfection process.
UV Transmittance	N/A	107	81.4 – 100	%	No	UV transmittance is a measure of the percentage of transmittance of UV light