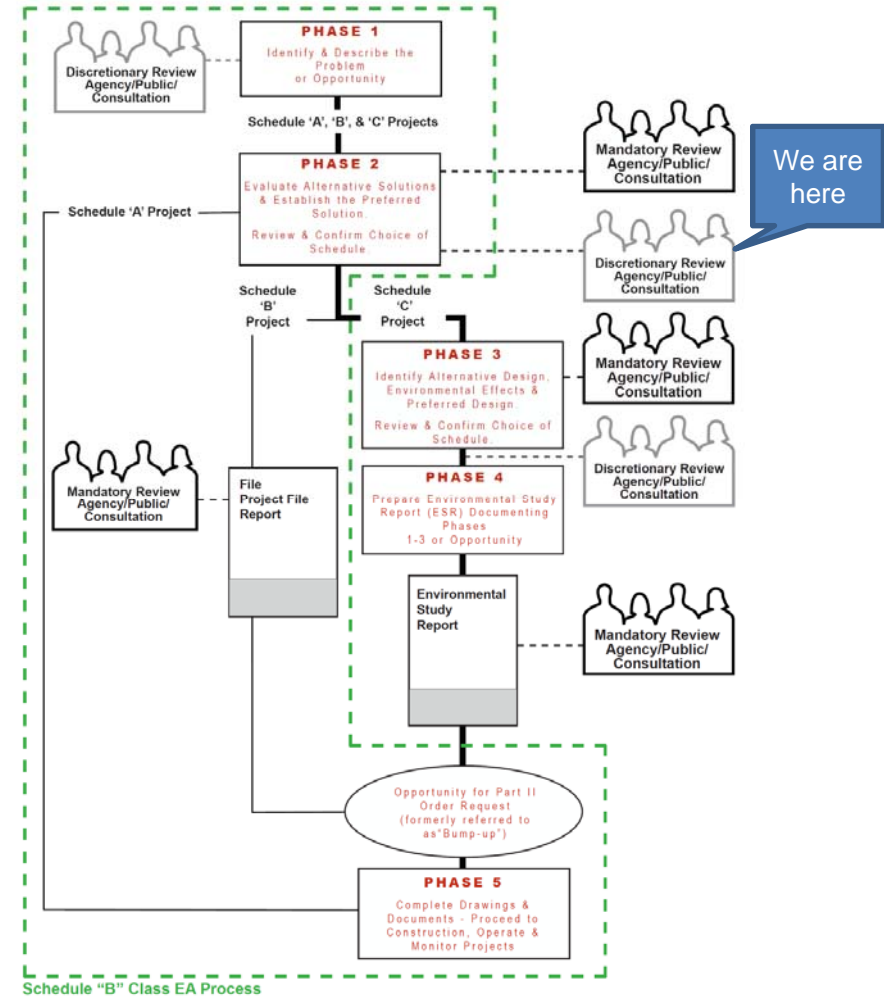


Days Road Sewage
Pump Station
Schedule 'B' Class
Environmental Assessment
Conceptual Design Review



Background

- A Public Information Centre (PIC) was held on April 25, 2018, to inform the general public, project stakeholders and review agencies of the preliminary findings of Phase 2 of the Class Environmental Assessment (Class EA).
- Replacement of the existing Sewage Pump Station (SPS) with a new SPS on an expanded site within LaSalle Park was presented as the recommended preferred alternative.
- To address public concerns regarding SPS impacts, Utilities Kingston advanced the conceptual design of the preferred alternative.



Meeting Objectives

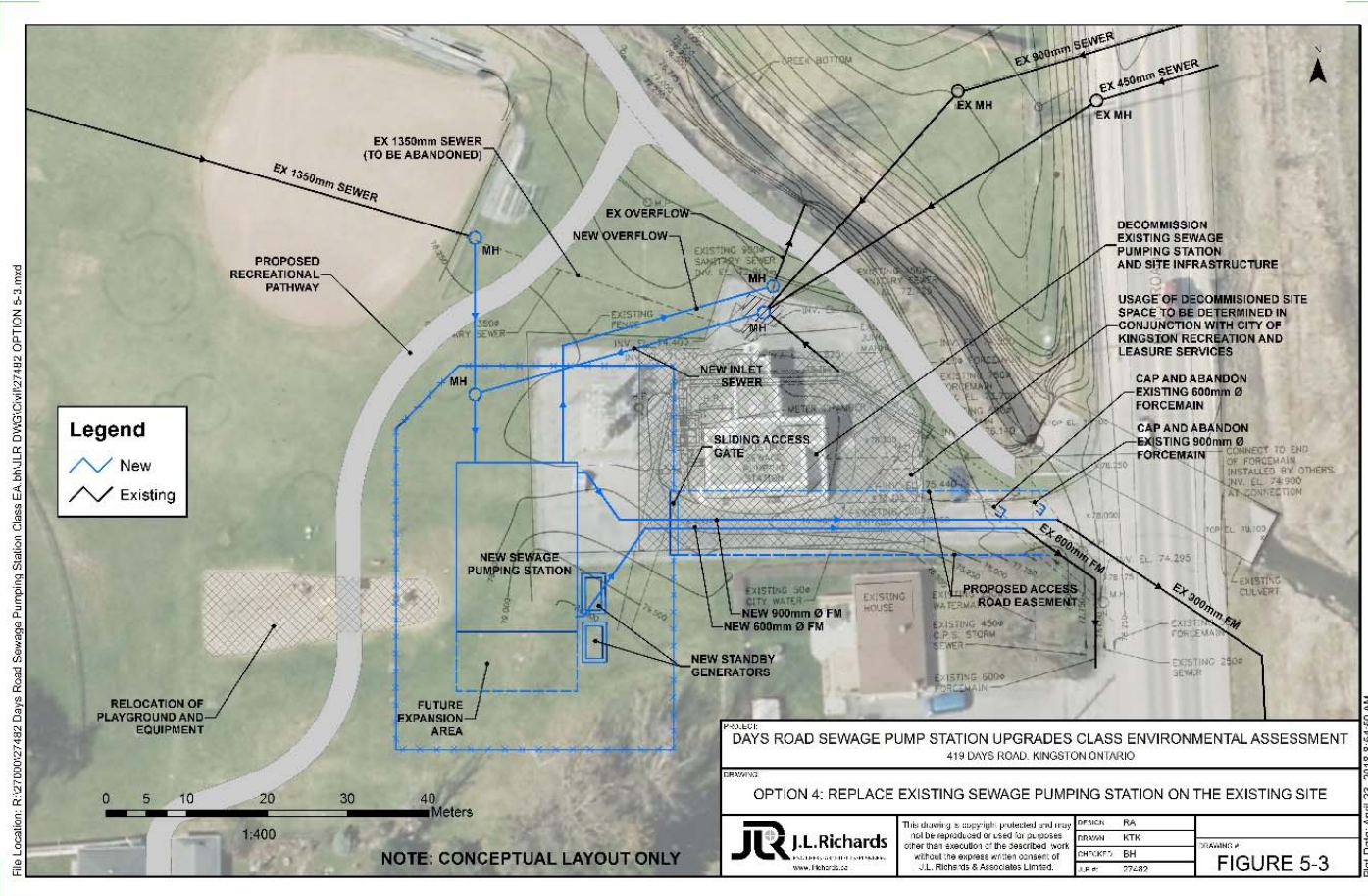
- Review the preferred alternative information provided at the Public Information Centre
- Present the proposed conceptual facility and site plan layouts of the new Days Road SPS
- Present new park features:
 - Recreational pathway layout
 - Playground relocation
 - Landscaping
 - Parking
- Review pump station operations and construction concerns
- Present pump station architectural rendering
- Discuss next steps

Option 4 – Replace Station on Existing Site, Expand into the Park

- Construct a new pump station southwest of the existing site
- Construct new sewers, forcemain connections and a new pumped overflow to Little Cataraqui Creek
- Decommission the existing pump station and site infrastructure
- Relocate the play structure and construct future recreational pathway
- Opinion of Probable Construction Cost: \$14,400,000

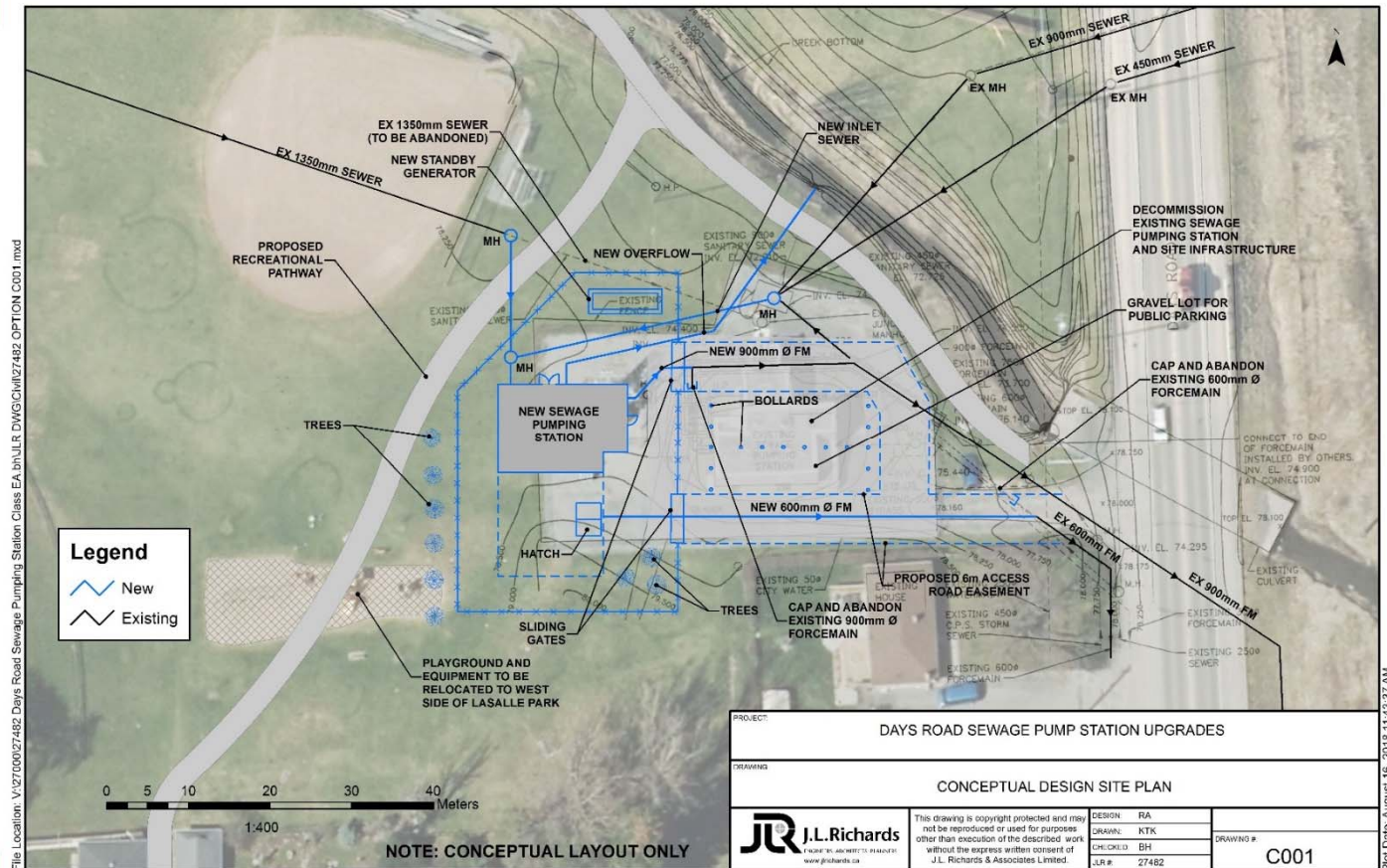
Advantages: Low construction cost, minimal impact on operations, potential for new park amenities and/or public parking spaces

Disadvantages: Relocation of playground, park use will be restricted during construction

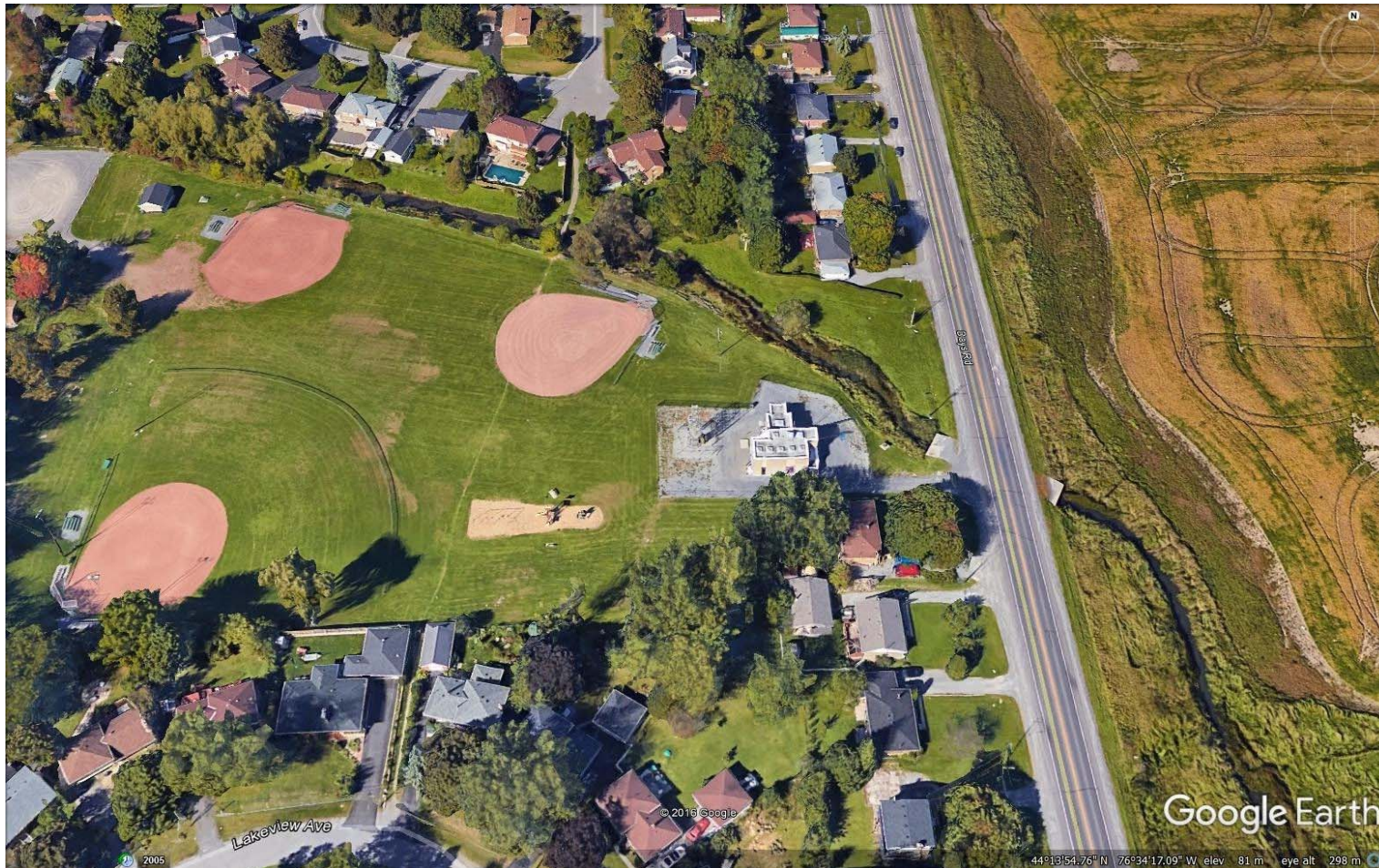


Conceptual Design Site Plan

- SPS shifted to the north for less obstructed views of the park from neighbouring residents
- Reduced Control Building footprint by placing equipment in underground structure
- Several public parking stalls for LaSalle Park usage
- Recreational pathway route
- Playground relocation
- Landscaping



Current LaSalle Park Aerial Photo



Future LaSalle Park Aerial Photo



Pump Station Construction and Operations

Q1: What will be done to mitigate blasting damage to my property as a result of construction?

A1: Contractor will be required to implement monitoring and controls on all blasting operations. Contract documents will include provisions for compensating homeowners for damage resulting from blasting operations.

Q2: Will odours still be a problem with the new pump station?

A2: An odour control system (e.g. activated carbon air filtration) will be provided to capture odours from the wet well.

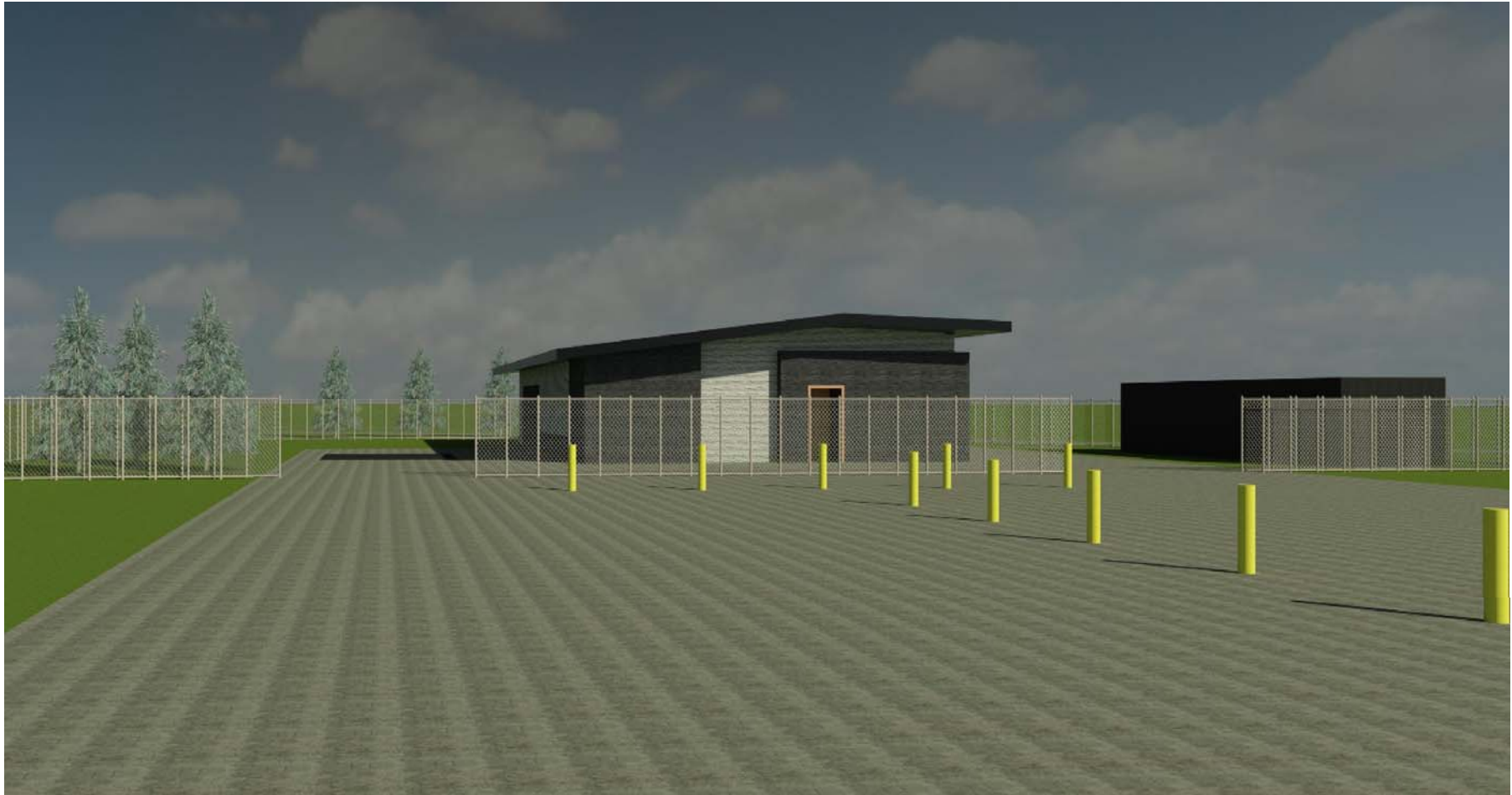
Q3: Will the new generator be noisy when it operates?

A3: The new standby generator will be housed in a sound attenuation enclosure, that limits noise at the property line to no more than 60 dBa.

Q4: Will the Pump Station HVAC system make any noise?

A4: New HVAC equipment shall not produce any noise louder than 60 dBa.

Days Road Sewage Pump Station Architectural Rendering



Next Steps

Event	Timeline
Meeting with Local Residents Stakeholders Group to Present Days Road SPS Conceptual Design & Architectural Rendering	August 21, 2018
Issue Schedule 'B' Class EA Project Notice of Completion	Early September, 2018
Finalize Class EA Documents	Early October, 2018
Proceed to Preliminary and Detailed Design	TBD (Design Phase – 6 to 8 months; Construction Phase – 12 to 18 months)